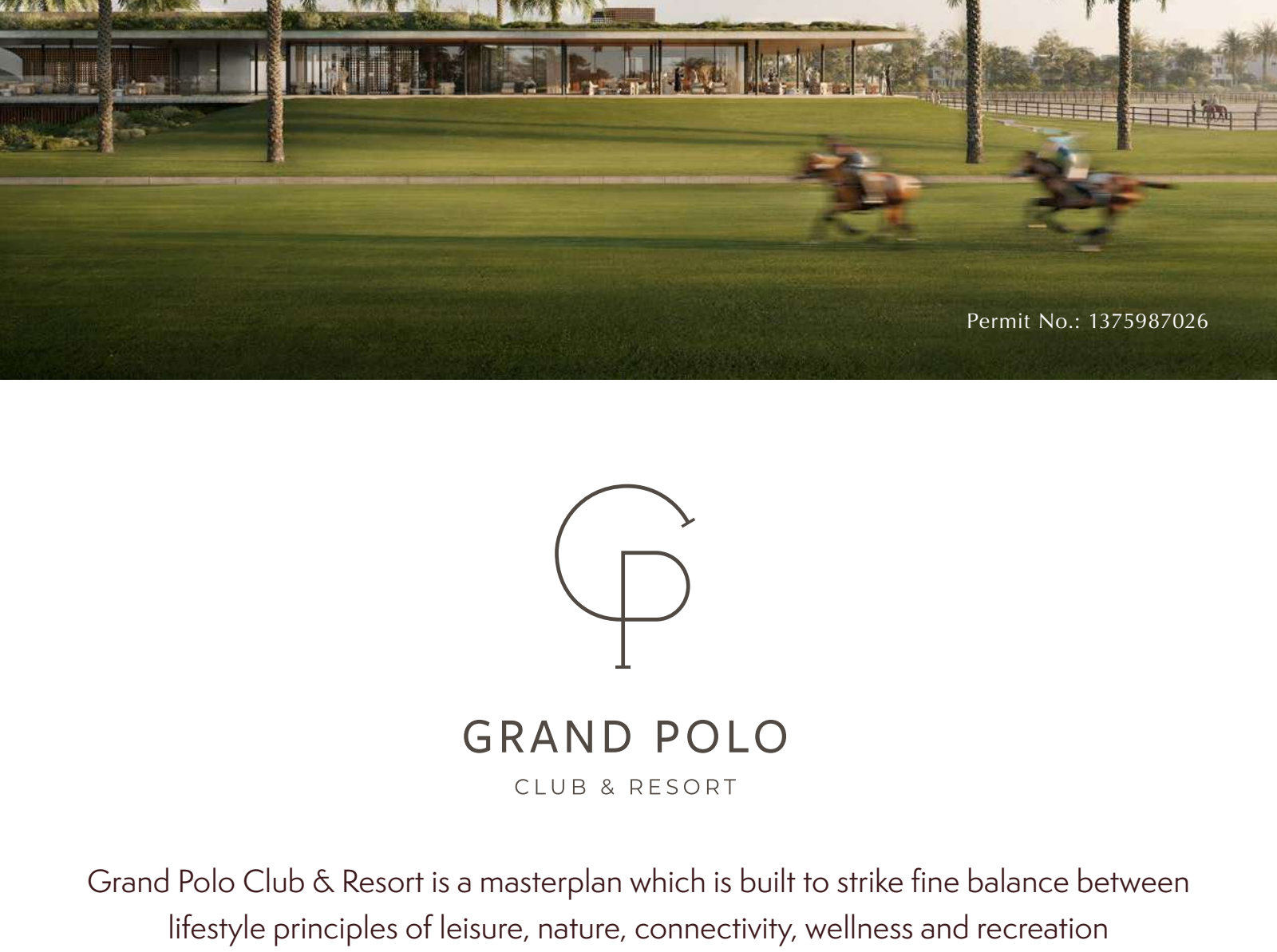


CHEVALIA

ESTATE 2

Grand Polo Club & Resort



Permit No.: 1375987026



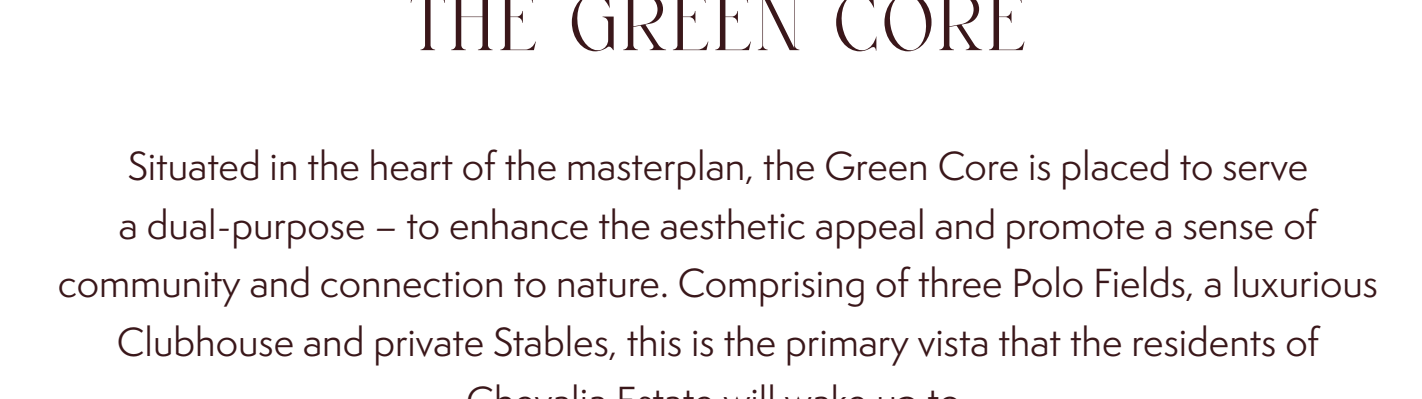
GRAND POLO CLUB & RESORT

Grand Polo Club & Resort is a masterplan which is built to strike fine balance between lifestyle principles of leisure, nature, connectivity, wellness and recreation. Whilst having the equestrian prestige at its heart, the green spaces loop-around and branch-out across the masterplan, connecting the residences thereby fostering a sense of community and belonging.



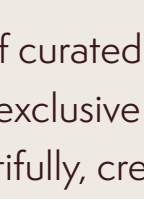
GRANDEUR ESTATE LIVING, INSPIRED BY EQUESTRIAN LEGACY

A majestic ode to equestrian heritage, Chevalia Estate 2 welcomes you with grand drives, lush landscapes, and luxury villas, surrounding The Clubhouse, The Stables, and picturesque linear park — embodying a timeless estate living.

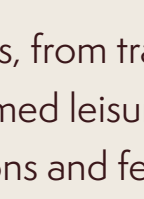


THE GREEN CORE

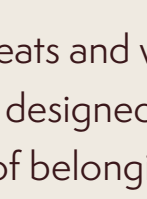
Situated in the heart of the masterplan, the Green Core is placed to serve a dual-purpose – to enhance the aesthetic appeal and promote a sense of community and connection to nature. Comprising of three Polo Fields, a luxurious Clubhouse and private Stables, this is the primary vista that the residents of Chevalia Estate will wake up to.



The Clubhouse



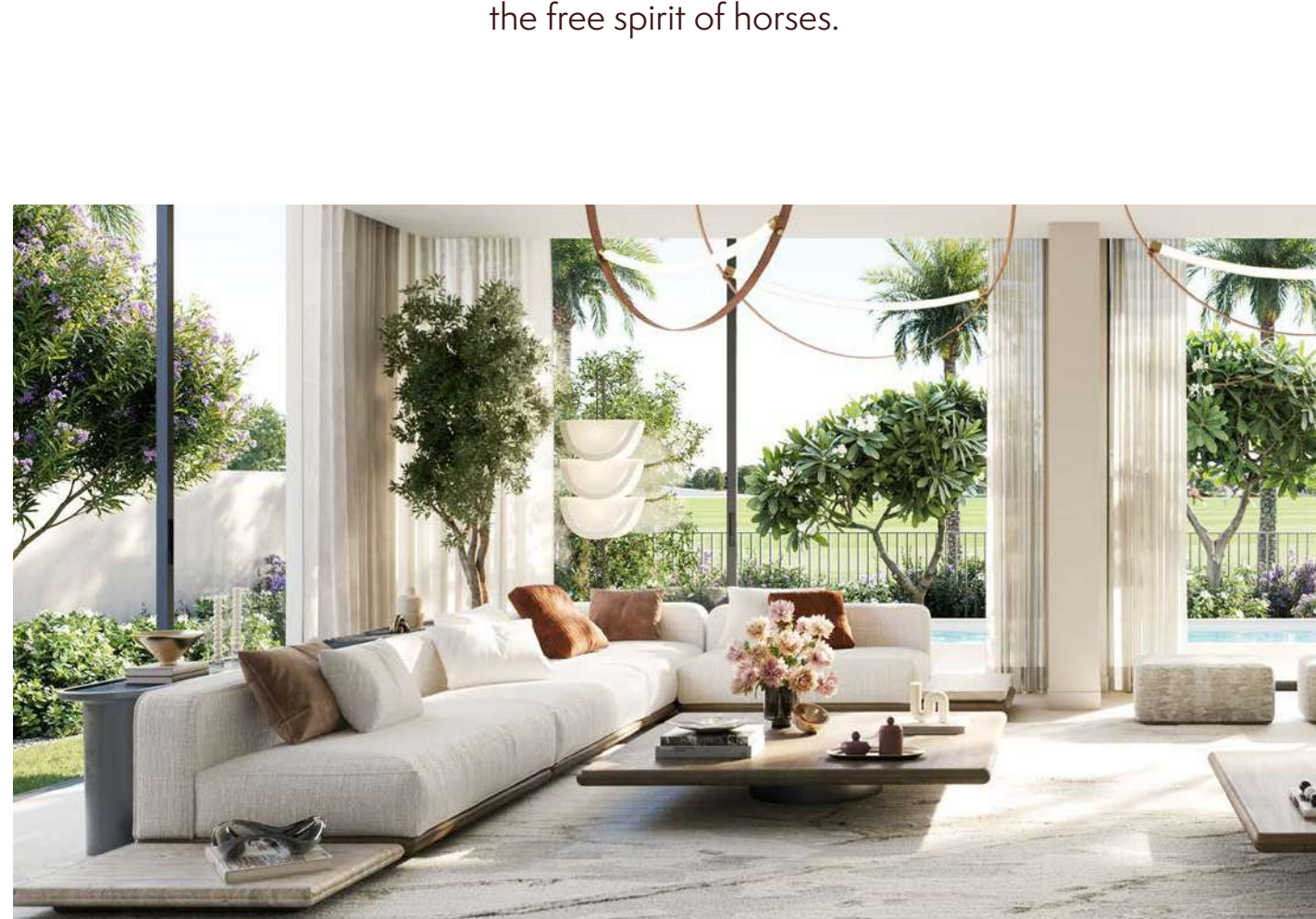
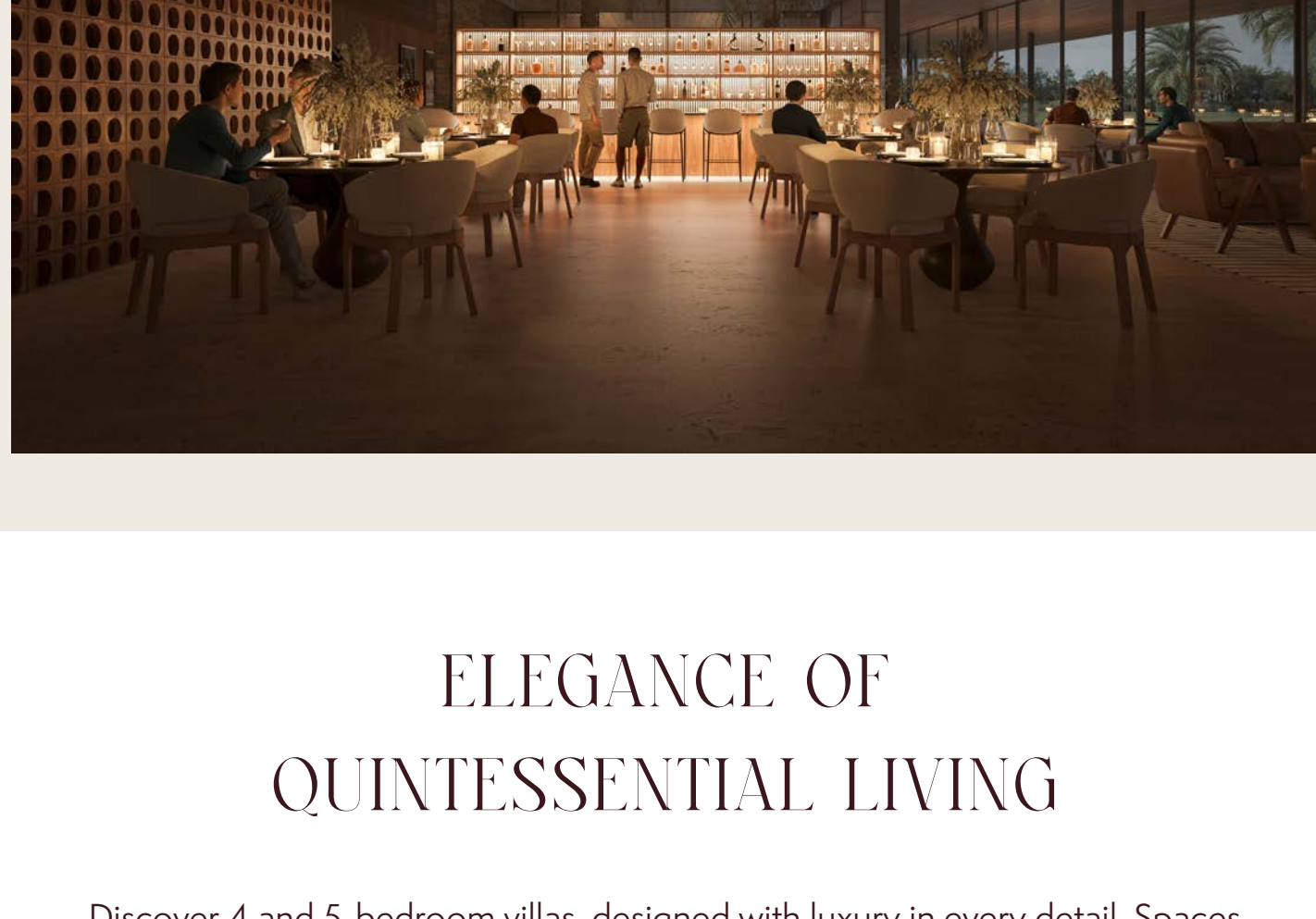
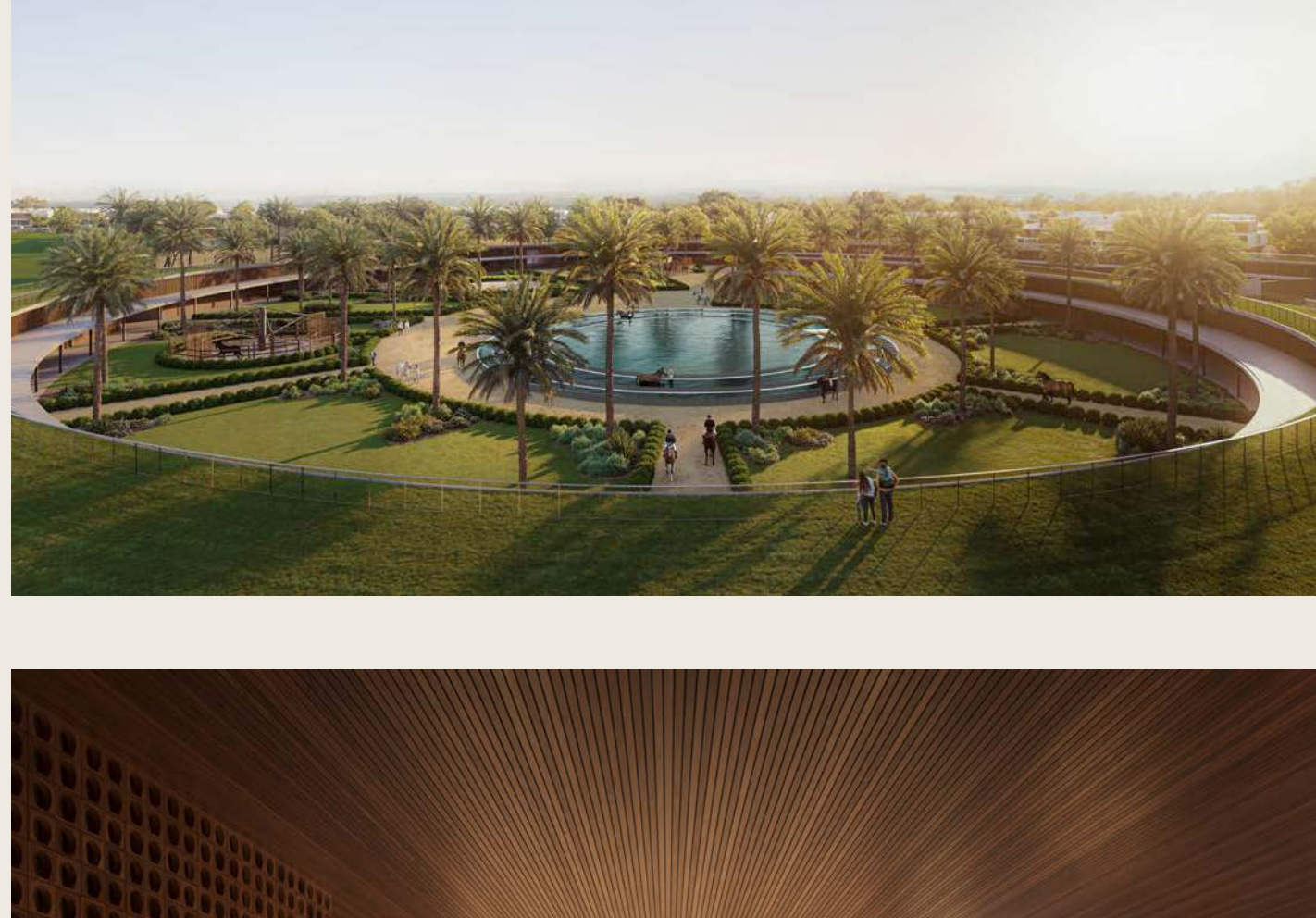
The Polo Fields



The Stables

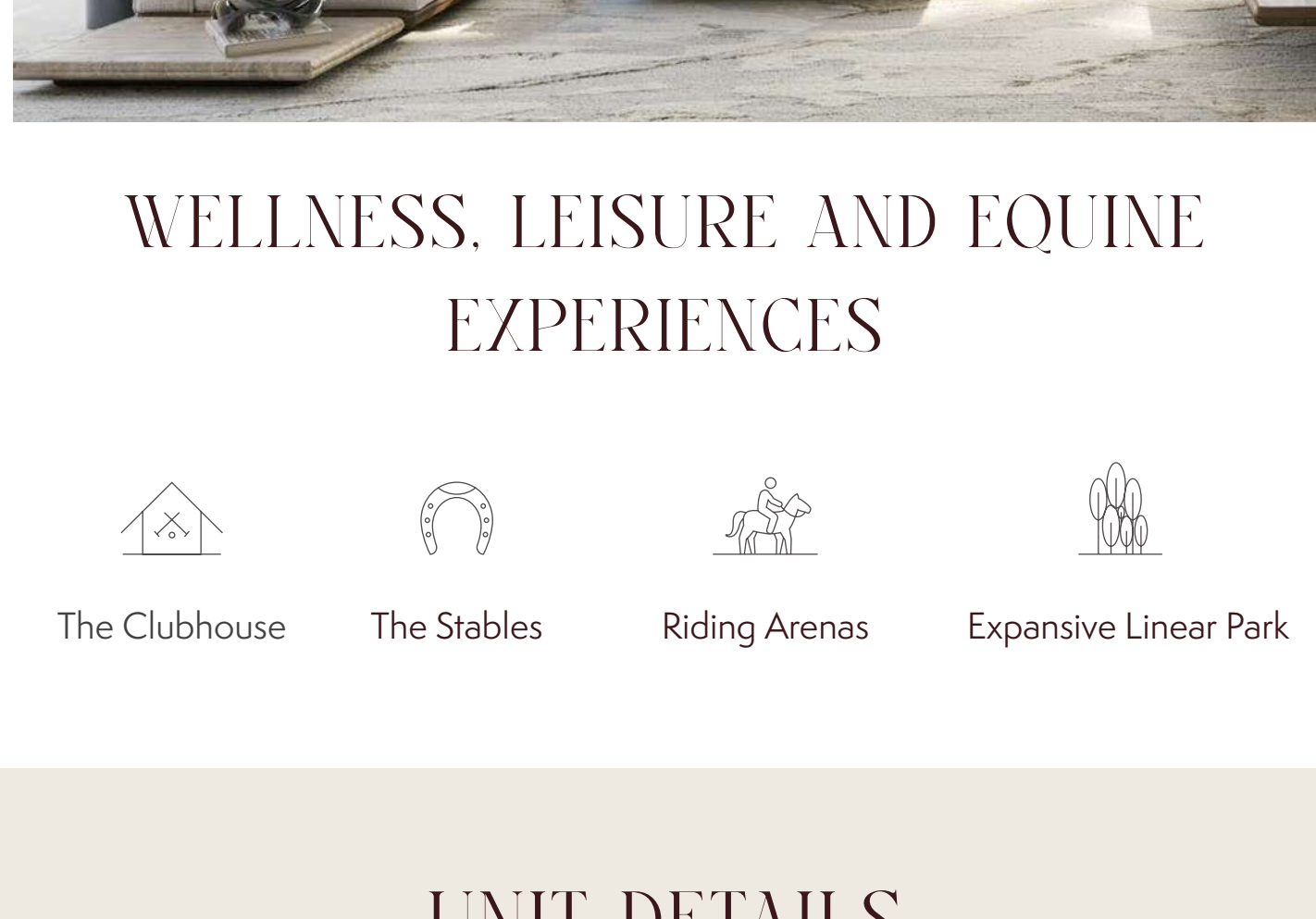
HERITAGE & LUXURIES IN EVERY DIRECTION

A world of curated moments awaits, from tranquil green retreats and wellness escapes to exclusive equestrian-themed leisure. A community designed for living beautifully, creating connections and feeling the sense of belonging.

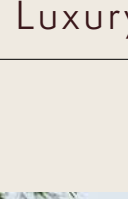


ELEGANCE OF QUINTESSENTIAL LIVING

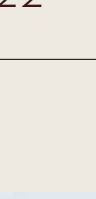
Discover 4 and 5-bedroom villas, designed with luxury in every detail. Spaces that celebrate the grace of equestrian opulence, with experiences inspired by the free spirit of horses.



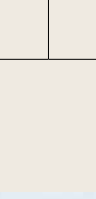
WELLNESS, LEISURE AND EQUINE EXPERIENCES



The Clubhouse



The Stables



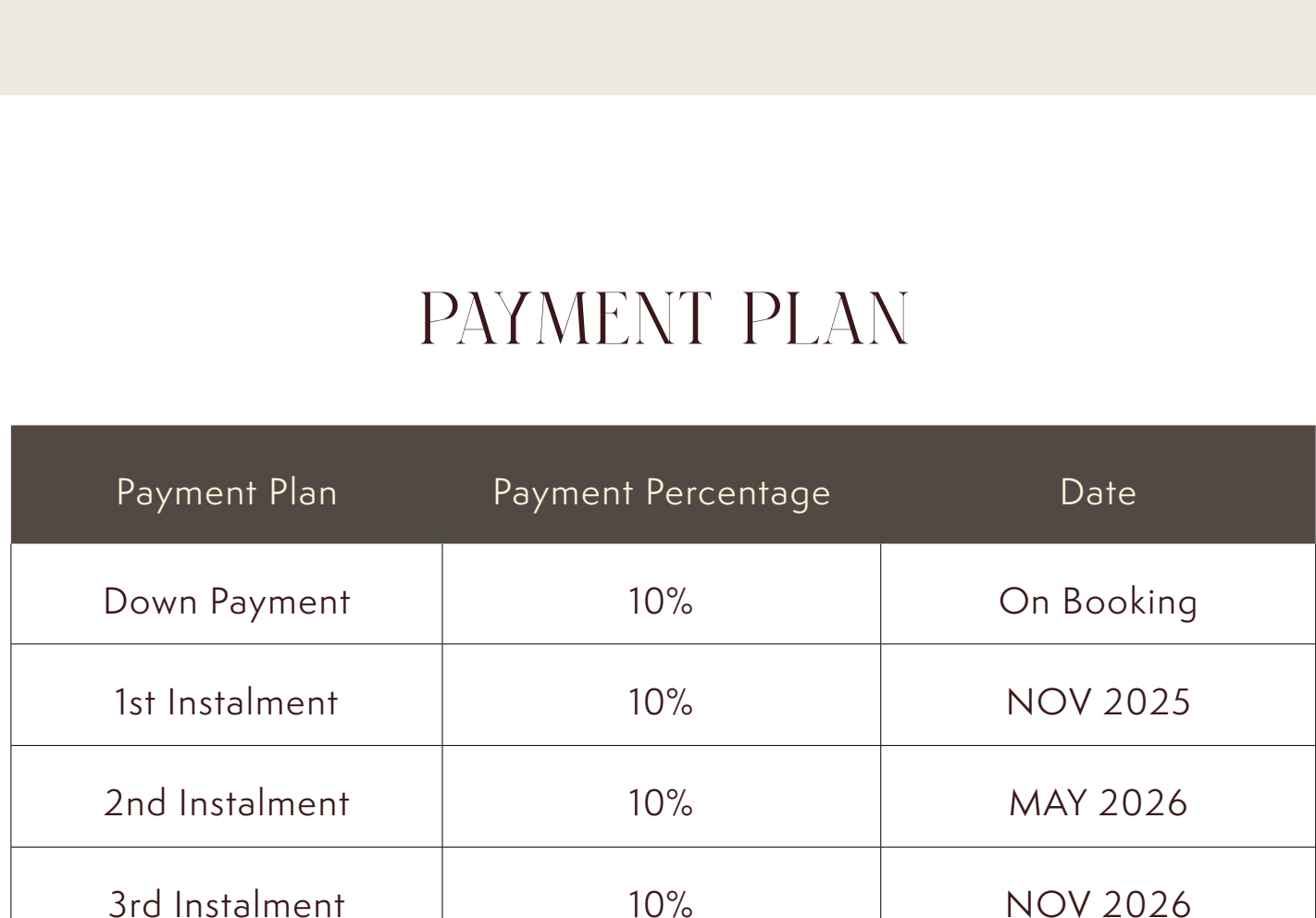
Riding Arenas



Expansive Linear Park

UNIT DETAILS

Type	Units	Avg. BUA (sq. ft.)	Avg. Plot Area (sq. ft.)	Starting Price (AED Million)
4 Bed Luxury	74	4,168	5,794	7.88 Mn
5 Bed Ultra Luxury	24	5,046	6,057	10.03 Mn
5 Bed Equestrian Luxury	22	8,635	9,149	17.61 Mn



PAYMENT PLAN

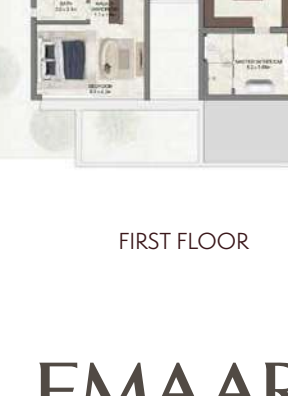
Payment Plan	Payment Percentage	Date
Down Payment	10%	On Booking
1st Instalment	10%	NOV 2025
2nd Instalment	10%	MAY 2026
3rd Instalment	10%	NOV 2026
4th Instalment 30% Construction Completion	10%	MAY 2027
5th Instalment 50% Construction Completion	10%	OCT 2027
6th Instalment 70% Construction Completion	10%	FEB 2028
7th Instalment 90% Construction Completion	10%	AUG 2028
8th Instalment 100% Construction Completion	20%	JUN 2029

TYPICAL FLOOR PLANS

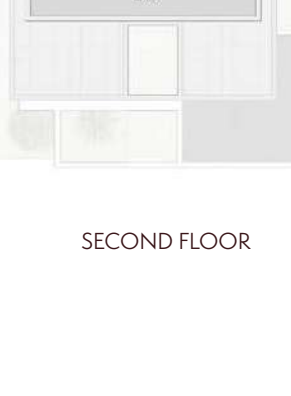
4 BEDROOM LUXURY VILLAS



GROUND FLOOR



FIRST FLOOR



SECOND FLOOR

5 BEDROOM LUXURY VILLAS



GROUND FLOOR



FIRST FLOOR



SECOND FLOOR

5 BEDROOM EQUESTRIAN LUXURY VILLAS



GROUND FLOOR



FIRST FLOOR



SECOND FLOOR